



St Joseph's Catholic Primary School

Friday 10th January 2025

Mission Statement

We work, learn and grow together in God's love



Congratulations to **Archie Conway** for receiving the 'Headteacher's Award' this week. Archie is an exemplary St Joseph's pupil in every way; he works hard, has excellent learning behaviour and shows respect and kindness to everyone. Well Done Archie!

STARS OF THE WEEK

| Year Group | Worker of the week | Reading Award | Values Award |
|------------|--------------------|-----------------|-------------------|
| Reception | Saylor Macangus | Sadie Buckley | Noah Hoyle |
| Year One | Harry Duxbury | Ava Walsh | Scarlett Phillips |
| Year Two | Mykyta Trokhymchuk | Lucas Butler | Alice Lees |
| Year Three | Samuel Unsworth | Rupert Faulkner | Buddy Haslam |
| Year Four | Darcey Power | Ava Haughton | Eddison Seaton |
| Year Five | Harry O'Brien | Alfie Walsh | Summer Kellett |
| Year Six | Elliot Girling | Evie Haughton | Elsa Barker |

St Joseph's Catholic Primary School, Rothwell Road, Anderton

01257 480598

www.st-josephs-anderton.lancs.sch.uk

YEAR SIX MEETING FOR PARENTS

On **Tuesday 21st January at 5:30pm** there will be a meeting for **parents/carers** of pupils in Year Six. During the meeting Mr Merrick and Mrs Berry will share information about upcoming SATs assessments and the Year Six residential to Towerwood. The meeting will last approximately half an hour.



ADMISSION TO PRIMARY SCHOOL, SEPTEMBER 2025.



Applications for Reception Class next year close on **15th January 2025**. Please use the QR code to apply online and bring any supplementary faith forms to the school office before this date.

BALANCE BIKES

Reception class children are looking forward to **January 30th and 31st** when Chorley School Sports Partnership are bringing the 'Balance Bikes' to school, during the day. They will work with the children to encourage them to ride along a course which they will set up for them.



PTFA BEETLE DRIVE

On **Monday 20th January** the PTFA, in conjunction with the cubs, are holding a **Beetle Drive**. This will take place in the school hall from **6:30pm—8pm**. Tickets are £1 each and are available to buy via the **shop** on Eduspot. Tuck shop and refreshments will be available to purchase. We look forward to seeing you for a fun evening.



YEAR THREE / FOUR SPORTSHALL ATHLETICS

On **Thursday 20th January** there is a Sportshall Athletics event for **Years Three and Four**. Further information will be sent home once the teams have been selected.



YEAR FIVE BENCHBALL

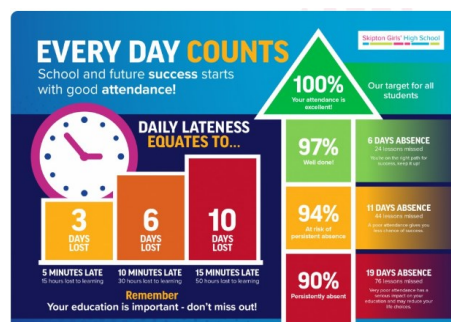
Our **Year Five team** is taking place in a Benchball festival on **Friday 10th January**. We wish them lots of luck. Have fun!



WEEKLY ATTENDANCE

| Year Group | Attendance |
|-----------------|------------|
| Reception Class | 97.20% |
| Year 1 | 97.24% |
| Year 2 | 97.6% |
| Year 3 | 97% |
| Year 4 | 98.6% |
| Year 5 | 97.5% |
| Year 6 | 95.8% |

Congratulations to **Year 4** for having the highest attendance this week. In accordance with Lancashire Attendance expectations any families falling below 90% have been informed to encourage increased attendance this term.



Following in the footsteps of St Joseph

"What is beautiful is good, and who is good will soon be beautiful."

Sapho

**ST JOSEPH'S PTFA, IN CONJUNCTION WITH
CUBS, INVITE YOU TO JOIN US FOR A FUN
EVENING AT OUR BEETLE DRIVE**



**TICKETS ONLY
£1 EACH
AVAILABLE TO
BUY ON
EDUSPOT**

MONDAY 20TH JANUARY

6:30PM-8PM

ST JOSEPH'S PRIMARY SCHOOL HALL

TUCK SHOP/REFRESHMENTS AVAILABLE TO PURCHASE